





### Key Features

- Modern and spacious two bed two bath apartment
- Large reception area with solid wood floors
- Lovely private balcony with river views
- Access to communal gardens
- Exclusive 24 h portered riverside development

### Description

A fantastic two double bedroom, two bathroom apartment with river views set on the fifth floor of this exclusive riverside development in Wandsworth. The flat comprises a spacious and bright reception area with access to a large private balcony with river views, semi open plan contemporary fully equipped modern kitchen with dishwasher, washer dryer, microwave and waste disposal, master bedroom with fitted wardrobe and en-suite shower room, second good size double bedroom and modern family bathroom. The property further benefits from solid wood floors throughout and carpets in the bedrooms, secure entry phone system, 24 hour concierge and 2 Gb broadband service for residents (by separate negotiation).

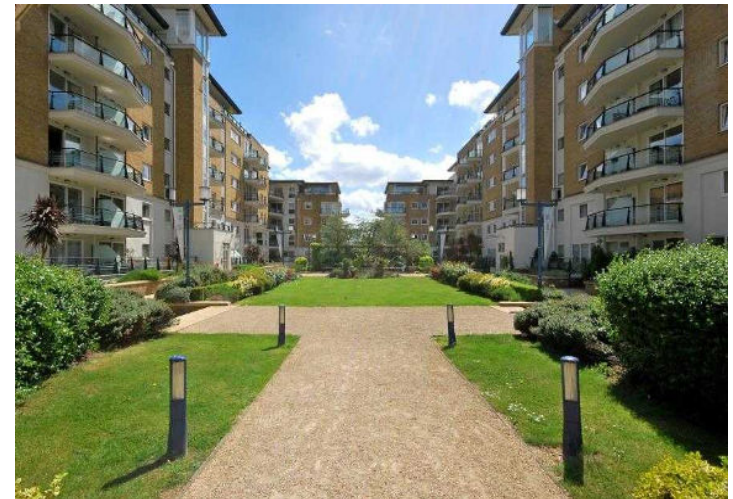
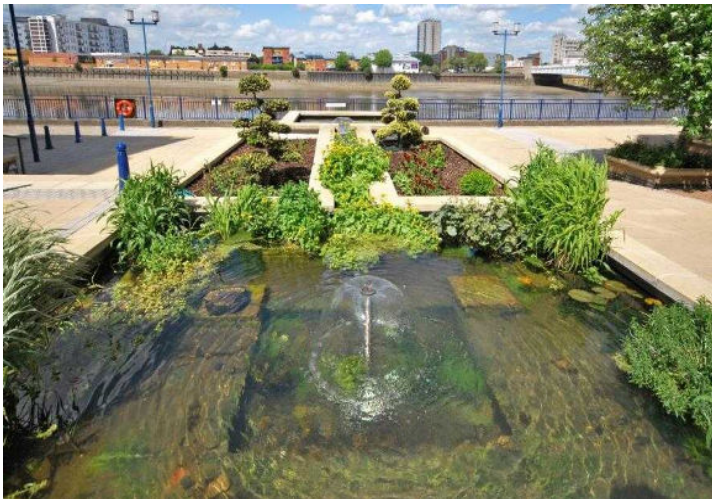
### Situation

Smugglers Way is close to Wandsworth Bridge and overlooks the River Thames. The riverside walk has a number of shops and cafes located within the development. The area benefits from a main-line station Wandsworth Town which is 11 minutes to Waterloo Station (Jubilee, Northern, Bakerloo lines, British Rail and Eurostar) and central London. By road, the nearest main route is the A3 and South Circular (A205) for routes in and out of London.

**RIVERSIDE WEST,  
SMUGGLERS WAY, SW18**



*Modern and spacious two bed two bath apartment within an exclusive riverside development in Wandsworth*



## Terms

**Price:** £545.58 per week

**Furnished/Unfurnished:** Furnished or Unfurnished

**Local Authority/Council Tax:** Wandsworth Band F £1,473.84

**Viewing:** To view call 020 7043 8431

**Parking:** Secure by sep neg

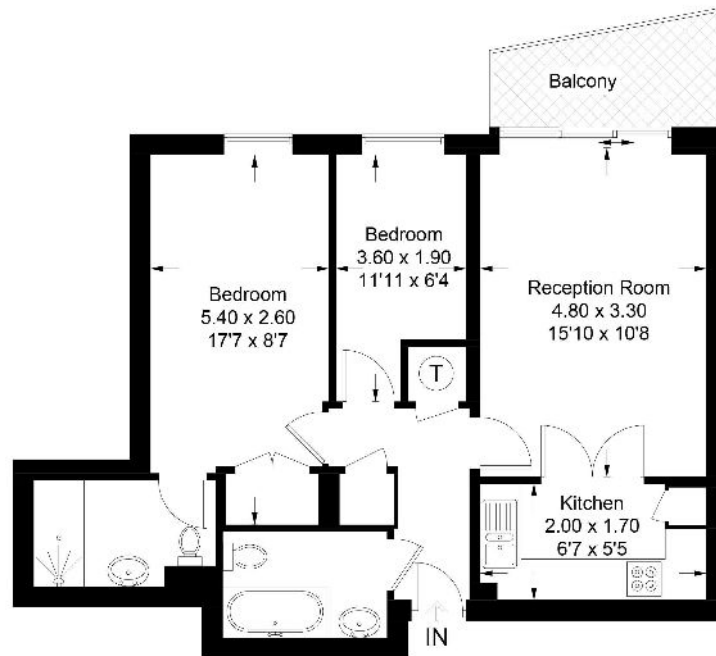
**Fees:** M2 Property do not charge tenant administration fees. We are members of The Property Ombudsman Redress Scheme for Residential Sales and Lettings (Membership No. D00776) and Client Money Protect (Membership No. CMP003231).

Energy Efficiency Rating		Environmental Impact (CO <sub>2</sub> ) Rating	
Current	Potential	Current	Potential
8.0	8.5	8.0	8.5
Band B	Band B	Band B	Band B
Band C	Band C	Band C	Band C
Band D	Band D	Band D	Band D
Band E	Band E	Band E	Band E
Band F	Band F	Band F	Band F
Band G	Band G	Band G	Band G

England, Scotland & Wales  
The energy efficiency rating is a measure of the overall energy efficiency of a property. The higher the rating, the more energy efficient the property is. The higher the rating, the lower the bill will be.

England, Scotland & Wales  
The environmental impact rating is a measure of a property's impact on the environment in terms of carbon dioxide (CO<sub>2</sub>) emissions. The higher the rating, the lower the impact it has on the environment.

Approximate Gross Internal Area = 57.1 sq m / 615 sq ft



**Fifth Floor**

Illustration for identification purposes only, measurements are approximate, not to scale.  
Copyright © M2 Property Limited



Local, on purpose.

M2 Property | 6 Roland Gardens | South Kensington | London SW7 3PH | T +44 (0)20 7043 8432 E hello@m2property.com W www.m2property.com

We have prepared these property particulars for the general guidance of intending purchasers or lessees. They are not designed to constitute a part of an offer or contract. For the purpose of the Property Misdescriptions Act 1991 and subsequent amendments, we have taken all reasonable steps to ensure the accuracy of the details contained herein; however, such statements are not to be relied on as a representation of fact and do not constitute any warranty or representation by M2 Property or the Vendors or Lessors. All photographs, measurements, floor plans and distances are given as a guide and should be checked before purchasing furniture, carpets, fixtures or fittings. Intending Purchasers or Lessees should satisfy themselves as to the accuracy of each of the statements contained in these particulars and should rely solely upon their own judgement, inspection and enquiries before entering into any contract. The floor plan, if shown, is intended as a guide to layout only and must not be relied on for any other purpose. It is not to scale. The copyright of all details, photographs and floor plans contained in these property particulars remain exclusive to M2 Property.